



*Safe Tool Storage*

*Safe, Sustainable and Secure!*

# Product information

## STS 7.0



*Stops theft of  
tools and materials*

Safe Tool Storage is a product that protects materials and tools from theft as it has, among other things, double shell protection and detachable lifting ears (provides extra protection against the device being moved away). This model is 7m long and can then store 6m long pipes, which is the standard length for eg expensive copper pipes.

Every year billions are stolen in the construction industry, with the right preventive measures and safety considerations we keep the criminals away. Adequate shell protection (Safe Tool Storage) supplemented with an alarm and normal response time, makes it extremely difficult to succeed in a burglary.

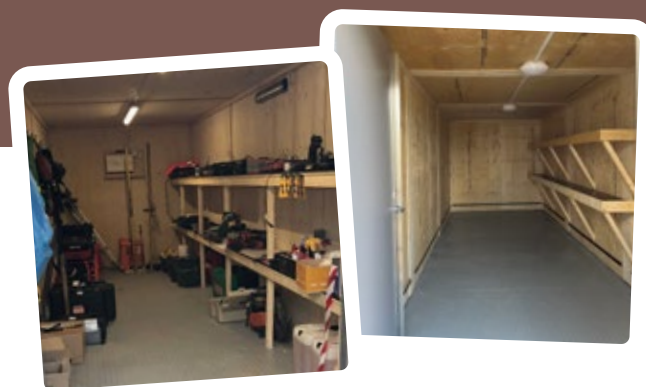
# Safety on your construction site

- Cooperation. Share the space with other companies. This reduces the cost of increased security.
- With passage control ID06, the module can always be locked and there is a control over who goes in and out.
- Increased security in the project reduces the risk of unforeseen costs due to burglary.
- The cost of a break-in is usually double the value stolen due to downtime, workarounds, repairs, etc.
- Several insurance companies today offer better terms at procurement of Safe Tool Storage for the projects. A stopped burglary can even correspond to the cost of purchasing the module.



**STS 7.0 - Outer dimensions (WxLxH)**  
**2.4x7.0x2.35 m - Weight approx. 5.00 tons**

STS 7.0 has double security doors with size 12x21M. The facility is designed to be used as tool storage. Maximum load 5 tons.



*More info:*



options



installation at  
workplace



instruction  
manual